

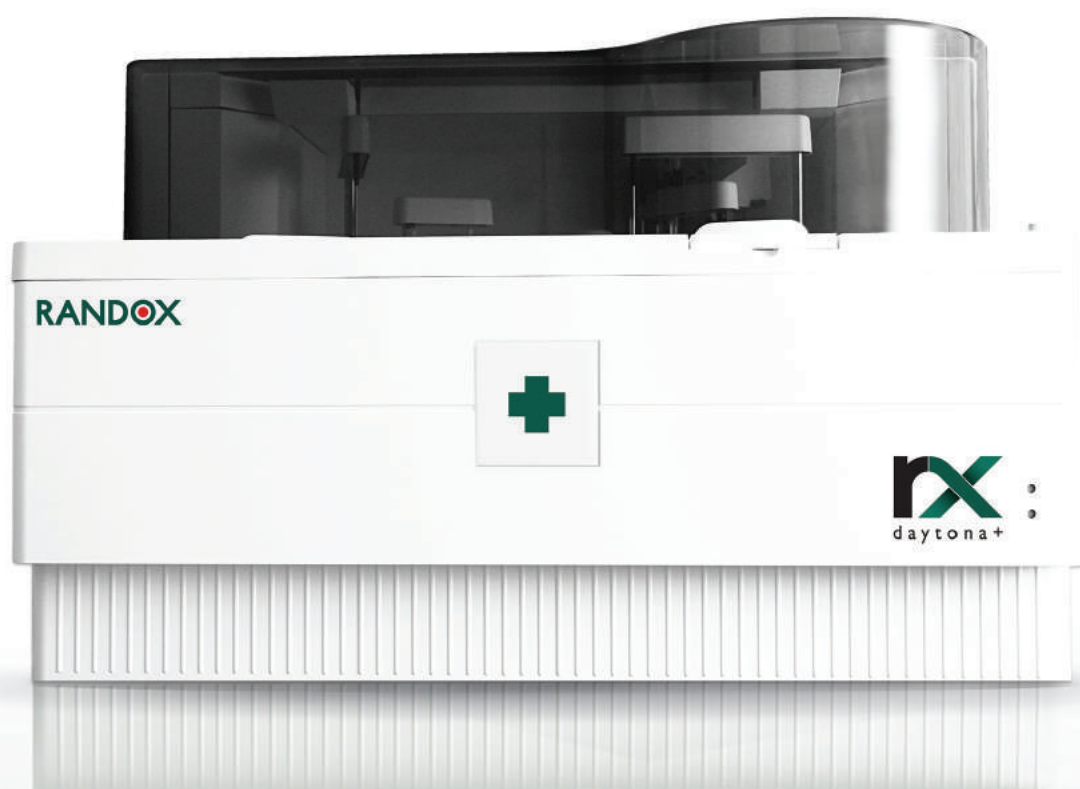
RX DAYTONA+

A FULLY AUTOMATED CLINICAL CHEMISTRY ANALYSER
WITH A COMBINED THROUGHPUT OF 450 TESTS PER HOUR



RANDOX

» HIGH QUALITY TESTING ON A COMPACT EASY TO USE CLINICAL CHEMISTRY ANALYSER FOR ACCURATE RESULTS YOU CAN TRUST



ρανδοξ+
RX
daytona+

01 BENEFITS

04 SYSTEM OVERVIEW

05 TEST MENU

09 SOFTWARE

11 FEATURES AT A GLANCE

12 ORDERING INFORMATION

13 SPECIFICATIONS

15 THE RX SERIES

17 RANDOX - A GLOBAL DIAGNOSTIC
SOLUTIONS PROVIDER

18 CONTACT US

» BENEFITS

The RX daytona+ is a **bench-top**, fully automated, random access clinical chemistry analyser capable of performing **routine & specialised** testing and emergency **STAT** sampling. The most **versatile** analyser in its class, the RX daytona+ combines robust hardware and intuitive software with the world leading RX series test menu for unrivalled performance. The RX daytona+ is capable of 270 photometric tests per hour and up to 450 including ISE.



TEST MENU & CONSOLIDATION

Expand your testing capabilities on one efficient platform

Extensive dedicated test menu, including: **routine chemistries, lipids, antioxidants, cardiac, diabetes testing plus therapeutic drugs and drugs of abuse** allows laboratories to expand their testing capabilities and bring more testing in-house reducing additional costs of sending tests out.

Direct, on-board, HbA1c testing capabilities provide many **time saving benefits** in the laboratory. As there is **no incubation step required** HbA1c tests can be performed immediately, performing QC and Calibration checks is quicker as only one assay is being tested, and offline calculations are not needed enabling **faster recovery times**.



ACCURATE RESULTS

Achieve accurate patient results first time, every time

Separate sample and reagent pipettes **minimise carryover**. Dedicated micropipettes are equipped with **liquid level sensors** and **crash detection**.

Dual five speed stirrers provide **optimised mixing** for each assay. Serum indices detect lipaemic, icteric and haemolytic samples.

High quality results **save operator time** avoiding unnecessary additional costs of repeat testing reducing the possibility of patient misdiagnosis.



UNRIVALLED PERFORMANCE

Reliability ensures no interruption to workflow

Sensitive **clot detection sensor** detects clots such as fibrin at the sample pipette. **On-board cuvette checking** function ensures only clean and viable reaction vessels are used.

Built in **inventory management** system automatically calculates remaining reagent volume and the number of tests available.

Superior performance means **minimal downtime** and swift **reporting of results**.



QUALITY CONTROL

Developed to improve confidence in your results

Generation of **Levey-Jennings charts**, **calibration curves** and **QC statistics** for reliable results. Users can view QC history.

There are **7 different calibration options** available including: Factor, Linear, Point to point, Log-logit, Exponential, Spline and Spline 2.

Unrivalled QC capabilities puts **patient safety** at the centre of your laboratory.



FLEXIBILITY & VERSATILITY

Increased functionality maximises testing capabilities

12 wavelengths generated via diffraction grating (340-800nm) ensuring a multitude of chemistries are possible on **one system**.

Just one click opens the **emergency** sample ordering screen for **rapid STAT testing**.

Barcode readers for both sample and reagent identification plus icon based software for **ease of use**.



COST SAVINGS

Smart technology designed to avoid additional costs

Minimal maintenance required, just **2 preventative maintenance** services per year means less down time.

Extensive test menu allows **consolidation** of testing, the ability to run specific proteins removes the need for a separate nephelometry system.

Economic platform with low water consumption of only **5 litres per hour**.



RANDOX



RX :
daytona+

αελαουα+
RX :
daytona+

» SYSTEM OVERVIEW



REAGENT CAROUSEL



50 reagent positions for 70ml & 20ml bottles, all cooled between 8-15°C. Automatic barcode identification ensures smooth recognition of reagents. Dedicated reagents are available from Randox.



CUVETTES



72 semi-permanent reaction cuvettes lasting for 3-6 months. On-board cuvette checking function ensures only clean and viable reaction vessels are used.



WASH STATION



A thorough 12 stage washing process with acid, alkali and pure water wash steps. Liquid level sensors at stations 1-5 prevent cuvette overflows.



SAMPLE CAROUSEL



50 positions are contained within the universal carousel, including 10 bespoke positions for calibrators and controls. The emergency loading port allows for the processing of STAT samples. Barcode sample identification ensures accurate matching of patient identification to specimen. Low sample volumes (1.5-35 μ l) enable easy testing of paediatric and veterinary patients.



MIXING SYSTEM



Equipped with dual 5 speed stirrers, operators can choose the correct mixing speed depending upon the viscosity of the reagent, therefore optimising the mixing of each assay to ensure best performance.

» THE RX SERIES TEST MENU

CLINICAL

AUTOIMMUNE:

Complement Component 3
Complement Component 4
CRP
CRP Full Range (0.3-160mg/l)
CRP High Sensitivity
IgA
IgE
IgG
IgM
Rheumatoid Factor

BASIC METABOLIC PROFILE:

Calcium
CO₂ Total
Chloride
Creatinine
Glucose
Potassium
Sodium
Urea

BONE PROFILE:

Alkaline Phosphatase
Calcium
Phosphorus
Total Protein

CARDIAC:

Adiponectin
Cholesterol
CK-MB
CK-NAC
CRP
CRP Full Range (0.3-160mg/l)
CRP High Sensitivity
Digoxin
Direct HDL Cholesterol
Direct LDL Cholesterol
HDL3
H-FABP
Homocysteine
Lipoprotein (a)
Myoglobin
sLDL
Triglycerides
TxB Cardio

COMPREHENSIVE METABOLIC PROFILE:

Albumin
Alkaline Phosphatase
ALT

AST (GOT)

Direct Bilirubin
Calcium
Chloride
CO₂ Total
Creatinine
Glucose
Lactate
Potassium
Sodium
Total Bilirubin
Total Protein
Urea

DIABETES:

Adiponectin
Cholesterol
Creatinine
Cystatin C
Direct HDL Cholesterol
Direct LDL Cholesterol
Fructosamine
Glucose
Glycerol
HbA1c/Hb
Microalbumin
NEFA (Non-Esterified Fatty Acids)
Ranbut (Hydroxybutyrate)
Total Protein
Triglycerides
Urinary Protein

ELECTROLYTES:

Calcium
Chloride (Nondirect)
CO₂ Total
Lithium
Magnesium
Potassium (Nondirect)
Sodium (Nondirect)

HAEMOLYTIC ANAEMIA:

G-6-PDH
Haptoglobin
LDH

HEPATIC FUNCTION:

Albumin
Aldolase
Alkaline Phosphatase
Alpha-1 Antitrypsin
ALT
Ammonia

AST (GOT)

Bile Acids
Cholinesterase
Complement Component 3
Complement Component 4
Direct Bilirubin
Gamma GT
GLDH
Glycerol
Haptoglobin
IgA
IgG
IgM
Iron (UIBC)
LAP
LDH
Total Bilirubin
Total Protein
Transferrin
Transthyretin (Prealbumin)

INFLAMMATION AND INFECTION:

Alpha-1 Acid Glycoprotein
ASO
CRP
Lactate
Rheumatoid Factor

LIPIDS:

Apolipoprotein A-I
Apolipoprotein All
Apolipoprotein B
Apolipoprotein CII
Apolipoprotein CIII
Apolipoprotein E
Cholesterol
Direct HDL Cholesterol
Direct LDL Cholesterol
HDL3
Lipoprotein (a)
sLDL
Triglycerides

NEONATAL SCREENING:

Alpha-1 Antitrypsin
CRP
CRP Full Range (0.3-160mg/l)
CRP High Sensitivity
IgE
Transthyretin (Prealbumin)

NEUROLOGICAL DISORDERS (CSF):

IgA
IgG
IgM

NUTRITIONAL STATUS:

Albumin
Copper
Ferritin
Iron
Iron (UIBC)
Lipase
Magnesium
Potassium
TIBC
Transferrin
Transthyretin (Prealbumin)
Zinc

PANCREATIC FUNCTION:

Amylase
Glucose
LDH
Lipase
Pancreatic Amylase

RENAL FUNCTION:

Albumin
Ammonia
Beta-2 Microglobulin
Calcium
Chloride
Creatinine
Cystatin C
Glucose
HbA1c/Hb
IgG
LDH
Magnesium
Microalbumin
Potassium
Sodium
Phosphorus (Inorganic)
Urinary Protein
Urea
Uric Acid



VETERINARY

Albumin	Cholesterol	Glucose	Potassium
Alkaline phosphatase	Cholinesterase (Butyryl)	Glycerol	Ranbut (Hydroxybutyrate)
ALT (GPT)	CK-NAC	HDL	Ransel (Glutathione peroxidase)
Aldolase	CO ₂ Total	Iron (UIBC)	Ransod (Superoxide dismutase)
Ammonia	Copper	Lactate	Sodium
Amylase	Creatinine	Lactate dehydrogenase	Total Protein
AST (GOT)	Canine CRP	LDL	Triglycerides
Bile acids	CRP	Lipase	Urea
Bilirubin	Fructosamine	Magnesium	Uric Acid
Calcium	Gamma-GT	NEFA (Non-esterified fatty acids)	Urinary protein
Chloride	GLDH	Phosphorus (Inorganic)	Zinc



TOXICOLOGY

THERAPEUTIC DRUGS:	Phenobarbitol	DRUGS OF ABUSE:	Ecstasy
Acetaminophen	Phenytoin	Amphetamines	EDDP
Carbamazepine	Salicylate	Barbiturates	Ethanol
Digoxin	Valproic Acid	Benzodiazepines	Methadone
Gentamicin		Cannabinoids	Opiates
Lithium		Cocaine metabolite	



PROTEINS

SPECIFIC PROTEINS:	Apolipoprotein E	CRP High Sensitivity	IgG
Alpha-1 Antitrypsin	ASO	Cystatin C	IgM
Alpha-1 Acid Glycoprotein	Beta-2 Microglobulin	Ferritin	Lipoprotein (a)
Apolipoprotein A-I	Ceruloplasmin	Fructosamine	Microalbumin
Apolipoprotein AII	Complement Component 3	Haptoglobin	Myoglobin
Apolipoprotein B	Complement Component 4	HbA1c/Hb	Rheumatoid Factor
Apolipoprotein CII	CRP	IgA	Transthyretin (Prealbumin)
Apolipoprotein CIII	CRP Full Range (0.3-160mg/l)	IgE	Transferrin



RESEARCH

ANTIOXIDANTS:	Transferrin	Glucose/fructose	BIOTECHNOLOGY:
Albumin	Uric Acid	Lactic acid	Glutamate
Bilirubin		Malic acid	Glutamine
Ferritin	FOOD AND	NOPA	
Glutathione Reductase	WINE TESTING:	Potassium	SPECIALITY:
Ransel (Glutathione Peroxidase)	Acetic acid	TAS	Acid phosphatase
Ransod (Superoxide Dismutase)	Ammonia	Total SO ₂	
TIBC	Copper		
Total Antioxidant Status	Ethanol		

» THE RX SERIES A-Z TEST MENU



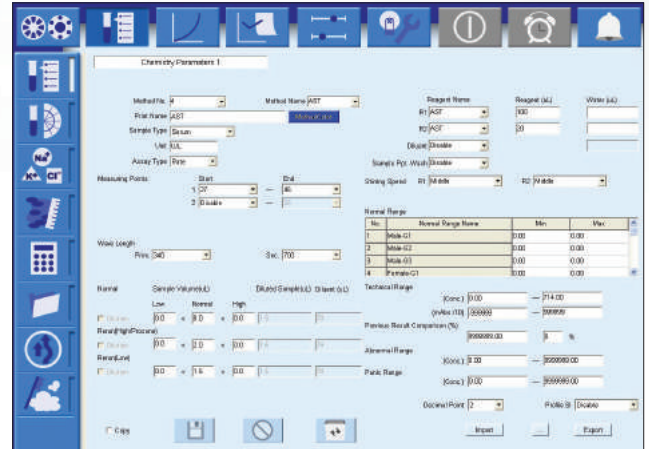
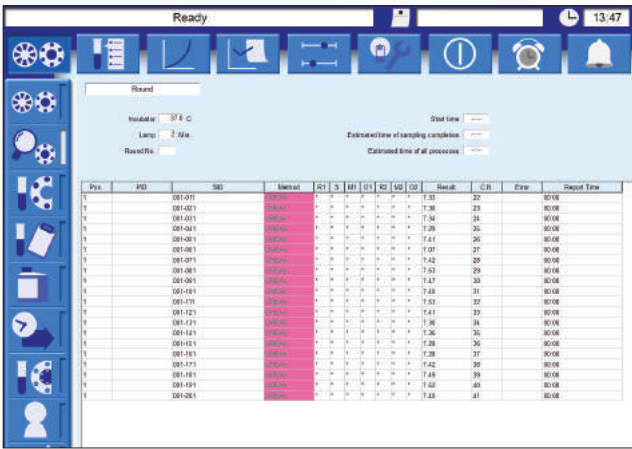
AUTOMATED

Acetaminophen	Carbamazepine	Glutamate	Methadone
Acetic Acid	Ceruloplasmin	Glutamine	Microalbumin
Acid phosphatase	Chloride (Non-Direct)	Glutathione Peroxidase (Ransel)	Myoglobin
Adiponectin	Cholesterol	Glutathione Reductase	NEFA (Non-Esterified Fatty Acids)
Albumin	Cholinesterase (Butyryl)	Glycerol	Opiates
Aldolase	CK-MB	Haptoglobin	Pancreatic Amylase
Alkaline Phosphatase	CK-NAC	HbA1c/Hb	Phenobarbitol
Alpha-1 Acid Glycoprotein	CO ₂ Total	HDL3	Phenytoin
Alpha-1 Antitrypsin	Cocaine metabolite	HDL Cholesterol (Direct)	Phosphorus
ALT (GPT)	Complement Component 3	Heart-Type Fatty Acid Binding Protein (H-FABP)	Potassium (Non-Direct)
Ammonia	Complement Component 4	Homocysteine	Rheumatoid Factor
Amphetamines	Copper	Hydroxybutyrate (Ranbut)	Salicylate
Amylase	Creatinine	IgA	sLDL
Apolipoprotein A-I	CRP	IgE	Sodium (Non-Direct)
Apolipoprotein All	CRP Full Range (0.3-160mg/l)	IgG	Superoxide Dismutase (Ransod)
Apolipoprotein B	CRP High Sensitivity	IgM	TIBC
Apolipoprotein CII	Cystatin C	Iron	Total Antioxidant Status
Apolipoprotein CIII	Digoxin	Lactate	Total Protein
Apolipoprotein E	Ecstasy	LAP	Transferrin
ASO	EDDP	LDH	Transthyretin (Prealbumin)
AST (GOT)	Ethanol	LDL Cholesterol (Direct)	Triglycerides
Barbiturates	Ferritin	Lipase	TxB Cardio
Benzodiazepines	Fructosamine	Lipoprotein (a)	Urea
Beta-2 Microglobulin	G-6-PDH	Lithium	Uric Acid
Bile Acids	Gamma GT	L-Lactic Acid	Urinary Protein
Bilirubin (Direct & Total)	Gentamicin	Magnesium	Valproic Acid
Calcium	GLDH	Malic Acid	Zinc
Canine CRP	Glucose		
Cannabinoids	Glucose/Fructose		



» SOFTWARE

The RX daytona+ utilises familiar Windows® based software and easily recognisable icons making it appealing and easy-to-use for all staff involved in its operation. Straightforward operation of the software results in minimal training requirements and enhanced productivity. The superior functionality of the quality control software generates Levey-Jennings charts, calibration curves and QC statistics for reliable patient results. LIMS (Laboratory Information Management System) connectivity is easily achievable via ASTM standard.

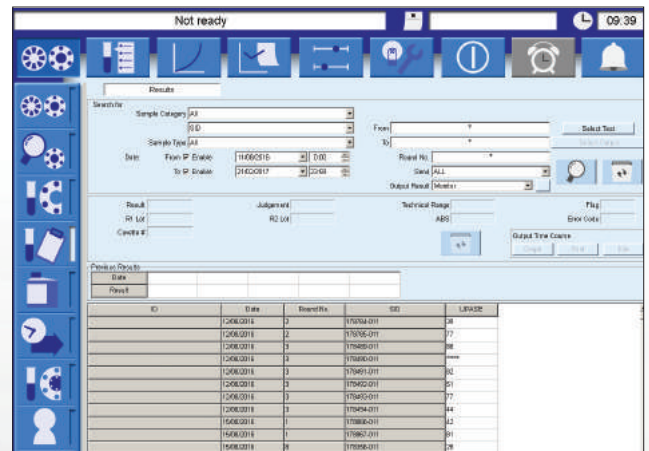
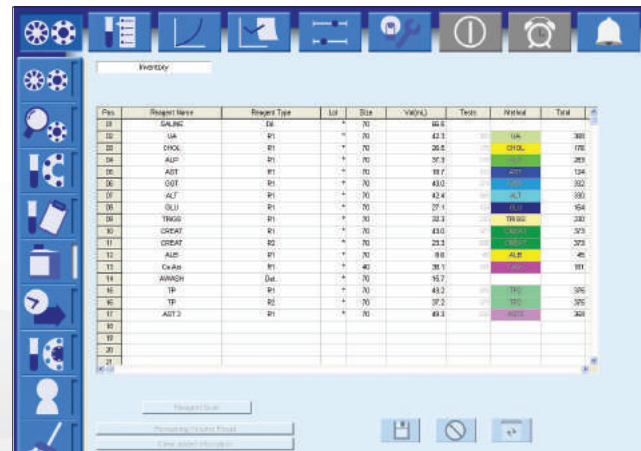


REPORTS

The operator can easily search for previous reports and view real time results status, including time left until completion. The RX daytona+ has a high capacity storage of up to 30,000 patient reports.

CHEMISTRY PARAMETERS

The chemistry parameters screen enables pre-sample dilution to be set up and re-running of assays as required. The user may set up to 20 different test profiles and define the order of analysis.

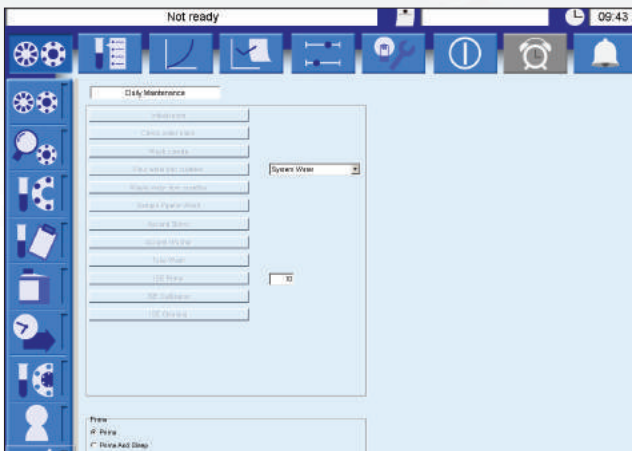


REAGENT INVENTORY

Remaining reagent volume is automatically calculated on-board alongside the number of tests available and stability of the reagents. Should insufficient volume remain for any reagent, an alarm will sound, allowing the operator to resolve the situation.

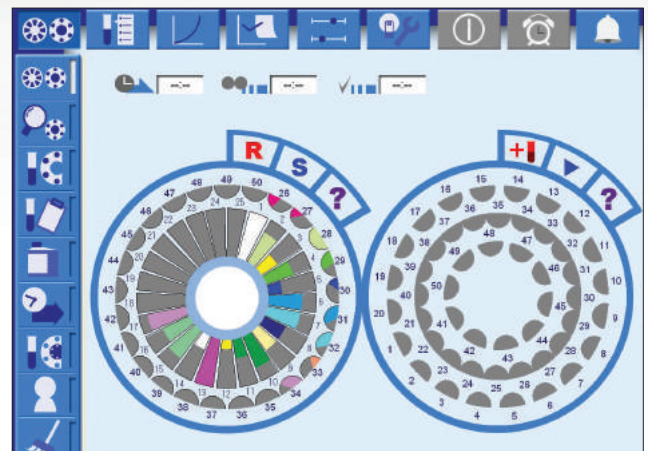
RESULTS

Results are easily searchable via options such as sample type or date. Laboratory staff can download and print results or transmit results to the LIMS system for all relevant clinicians to view.



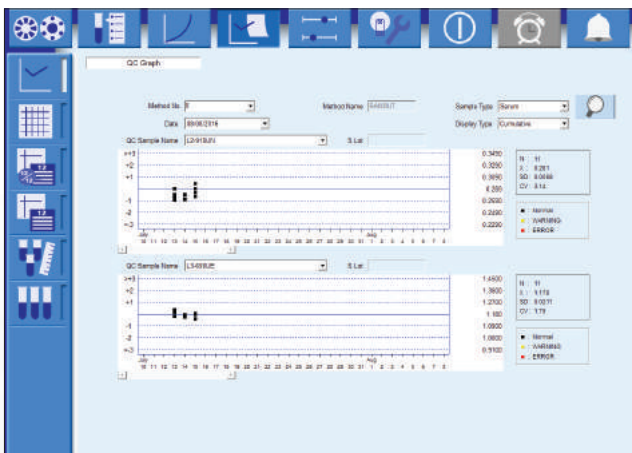
MAINTENANCE

The operator is instructed via easy to follow steps on how to carry out daily, weekly and monthly maintenance. Daily maintenance takes only 5 minutes to do. The analyser has a countdown timer to show when routine servicing is due.



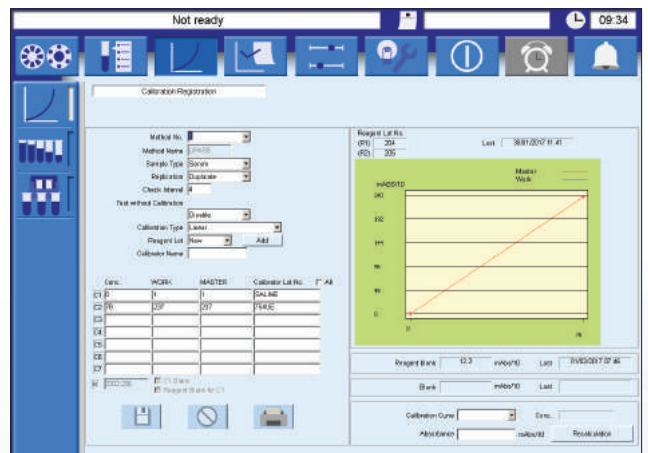
RUN MONITOR

The run monitor displays full patient demographics. This screen indicates the number of tests and time left until completion. The operator may also add emergency STAT samples from this screen.



QUALITY CONTROL

The QC screen generates Levey-Jennings charts and calibration curves for a visual performance assessment, plus easy identification of QC errors and emerging trends. QC multi rules can be applied to ensure high error detection and minimal false rejection.



CALIBRATION

The software displays the current valid calibration for each assay installed, the reagent blank absorbance (if appropriate) and the calibration check interval. There are 7 calibration models available: Factor, Linear, Point to point, Log-logit, Exponential, Spline & Spline 2.

» FEATURES AT A GLANCE

Low water consumption
of just 5 litres per hour



Unique emergency loading port
allows STAT samples to be analysed
quickly and easily during runs



Automatic wake and sleep
mode plus pre-programmable
instrument preparation



Dual 5 speed stirrers optimised
for each chemistry reaction



Clot detection sensor recognises clots
such as fibrin at the sample pipette so that
only acceptable samples are tested



Reagent micropipette with liquid level
sensor and crash detection alerts operator
to follow troubleshooting steps



» ORDERING & CUSTOMER SUPPORT



In choosing to purchase the RX daytona+ from Randox you are partnering with a company that has over 35 years' experience in the IVD industry and clinical chemistry analyser placements in over 120 countries worldwide. Customers needs vary and Randox sales staff and distributor partners will work with your laboratory to create a bespoke package to suit your requirements. Randox Laboratories provide customers with an unrivalled technical support service.

ORDERING INFORMATION

RX daytona+ with ISE	RX4040
RX daytona + without ISE	RX4041

For more information contact your local representative, or email us at:

theRXseries@randox.com

» SPECIFICATIONS

PHYSICAL DIMENSIONS

Height	625mm
Depth	670mm
Width	870mm
Weight	120kg

PERFORMANCE CHARACTERISTICS

Throughput	270 tests per hour, 450 tests per hour with ISE
Analyser type	Compact fully automated random access bench top clinical analyser
Assay type	Endpoint, kinetic and ISE
Maintenance	Daily maintenance - less than 5 minutes. Simple twice yearly preventative maintenance service

REAGENT & SAMPLE SYSTEM

Data management	Storage of up to 30,000 patient reports, search facility
Test channels	50 photometric channels, 3 direct ISE
Sleep mode	User defined sleep mode capabilities with automatic wash and instrument prep
Reagent pipette	Dedicated reagent micropipette with liquid level sensor and crash detection
Reagent capacity	Removable turntable with 50 cooled positions for 20ml and 70ml bottles
Reagent cooling	8 to 15°C
Reagent identification	Barcode reagent identification
Reagent inventory	Calculation of remaining reagent volume and tests available Alert for shortage or expired reagents
Sample addition	Sampling interruption for addition of samples
Sample capacity	50 positions are contained within the universal carousel, including 10 bespoke positions for calibrators and controls
Sample dead volume	150µl in standard or primary tubes, 100µl in paediatric cups
Sample dilution	Pre-dilution and automatic re-assay with diluted, reduced or increased sample volume
Sample identification	Barcode sample identification
Sample pipette	Dedicated sample micropipette with liquid level sensor, crash protection and clot detection
Sample tube size	Multiple primary tube sizes (diameter 12 to 16mm, height 55 to 100mm), Paediatric cups
Sample type	Serum, plasma & urine
Sample volume	1.5 to 35µl (0.1µl increments)
STAT sampling	STAT samples can be added immediately via emergency loading port

REACTION SYSTEM

Reaction time	10 minutes (R1: 5 min. + R2: 5 min.)
Reaction volume	100 to 350µl
Stirring speed	5 speed levels available
Stirring system	Dual 5 speed stick type rotating stirrers
Temperature control	Dry bath
Water consumption	Maximum 5 litres per hour
Water requirements	NCCLS type 1 or 2 purified water supply
Wash unit	12 stage washing process
Cuvettes	72 semi-permanent cuvettes
Incubator temperature	37°C ± 0.1°C
Cycle time	13 seconds

OPTICAL SYSTEM

Detector method	Direct absorbance in cuvette (bi-chromatic and monochromatic)
Detection principal	12 wavelengths generated via diffraction grating: 340, 380, 415, 450, 510, 546, 570, 600, 660, 700, 750 and 800nm
ISE unit	Optional ISE unit available
Light source	Halogen tungsten lamp air cooled by fan

CALIBRATION & QC

Quality control	Interactive Levey-Jennings charts, daily, monthly and batch QC with data archiving
Calibration principal	Factor, Linear, Point to point, Log-logit, Exponential, Spline and Spline 2

POWER & CONNECTIVITY

Power requirement	AC100V to 120V, 6.5A (Max.) AC200 to 230V, 3.3A (Max.) 50/60Hz
Power consumption	650VA
Permissible voltage variation	± 10% (Max.)
LIMS connectivity	Bi-directional ASTM Standard (RS232 connection)

OPERATING SYSTEM

Operator interface	Windows® based software
--------------------	-------------------------

» THE RX SERIES



A semi-automated clinical chemistry analyser with the ability to run flow cell or cuvette mode. The RX misano offers 9 wavelengths spanning 340-700nm as standard, with an optional 280nm. A large 7" touch screen monitor responsive even when wearing lab gloves allows the user to easily navigate through the testing screens of the analyser. USB port allows to import Randox-defined test menus and export patient, QC and calibration results.



A fully automated, random access clinical chemistry analyser with 12 wavelengths between 340-800nm and a throughput of 170 tests per hour. Available as a benchtop or floor standing model with Windows® based software and STAT sampling as standard. The low throughput of the RX monaco provides small to mid-volume laboratories with cost effective analysis and high quality testing.



A fully automated, random access benchtop clinical chemistry analyser with a photometric throughput of 400 tests per hour increasing to 560 including ISE. There are 12 wavelengths spanning 340-800nm and the RX imola provides liquid level, clot, crash and bubble detection. Software is windows based and STAT sampling is available via an emergency loading port. The RX imola offers efficiency for medium sized laboratories.



A fully automated, random access, floor standing clinical chemistry analyser with a photometric throughput of 800 test per hour, increasing to 1200 including ISE. There are 13 wavelengths spanning 340-800nm and a fully automated onboard, haemolysis function for running HbA1c. Accurate results are supported by liquid level, clot, and crash detection.

The operating system utilises a modern touchscreen interface and Windows® icon based software.

»» RANDOX - A GLOBAL DIAGNOSTIC SOLUTIONS PROVIDER

Randox has been supplying laboratories worldwide with revolutionary diagnostic solutions for over 35 years. Our experience and expertise allow us to create a leading product portfolio of high quality diagnostic tools which offer reliable and rapid diagnosis. We believe that by providing laboratories with the right tools, we can improve health care worldwide.

REAGENTS

Randox offers an extensive range of diagnostic reagents, giving biochemistry laboratories the opportunity to advance their routine and niche testing.

The Randox reagents range goes beyond routine chemistries. At Randox we re-invest significantly in research and development to ensure we meet the ever changing needs of the laboratory. As a result, the esoteric reagents range from Randox is extensive and includes sLDL, Lipoprotein(a), H-FABP, Cystatin C, TxBCardio, Adiponectin, Bile Acids, Copper, D-3-Hydroxybutyrate, G-6-PDH, Non-Esterified Fatty Acids, Total Antioxidant Status and Zinc.

Randox Reagents provide a number of benefits for the laboratory: Cost savings through excellent stability, automated methods and standards supplied with some kits; confidence in results with high performance methods, minimal interferences and wide measuring ranges; convenience and choice with applications for over 100 biochemistry analysers; liquid ready-to-use reagents, a wide range of kit sizes and complementary controls and calibrators.

ACUSERA

Randox is a world leading manufacturer of multi-analyte, true third party controls. Thousands of laboratories rely on us to accurately assess test system performance and ultimately empower them with the confidence required to release patient test results. With more than 390 analytes available across the Acusera range we can uniquely reduce the number of individual controls required while simultaneously reducing costs, time and storage space. A choice of formats are available, including liquid or lyophilised, ensuring flexibility and suitability for laboratories of all sizes and budgets.

Some of our principle products include Clinical Chemistry, Immunoassay, Urine, Immunology/Proteins, Cardiac Markers and Therapeutic Drugs among others. As a primary manufacturer, Randox are also able to offer the unique service of custom made controls.

RIQAS

Boasting over 45,000 participants and more than 360 parameters across 32 comprehensive & flexible EQA programmes, RIQAS is the largest international EQA scheme. Designed to cover all areas of clinical testing, each of our multi-analyte programmes benefit from a wide range of concentrations, frequent reporting, rapid feedback and informative yet user-friendly reports.

BIOCHIP ARRAY TECHNOLOGY

Biochip Array Technology (BAT) is an innovative assay technology for multi-analyte screening of biological samples in a rapid, accurate and easy to use format. BAT offers highly specific tests, coupled to highly sensitive chemiluminescent detection, providing quantitative results in easy to interpret reports. Randox BAT assays offer diagnostic, prognostic and predictive solutions across a variety of disease areas including sexually transmitted infection, cardiovascular disease (CVD), familial hypercholesterolemia (FH), colorectal cancer and respiratory infection.

Contact us for more information on any of our products and services:

Head Quarters

Randox Laboratories Ltd, 55 Diamond Road, Crumlin, County Antrim, BT29 4QY, United Kingdom

☎ +44 (0) 28 9442 2413 ✉ marketing@randox.com 🌐 randox.com/clinical-chemistry-analysers/

International Offices



AUSTRALIA

Randox (Australia) Pty Ltd.
Tel: +61 (0) 2 9615 4640



BRAZIL

Randox Brasil Ltda.
Tel: +55 11 5181-2024



CHINA

Randox Laboratories Ltd.
Tel: +86 021 6288 6240



CZECH REPUBLIC

Randox Laboratories S.R.O.
Tel: +420 2 1115 1661



FRANCE

Laboratoires Randox
Tel: +33 (0) 130 18 96 80



GERMANY

Randox Laboratories GmbH
Tel: +49 (0) 215 1937 0611



HONG KONG

Randox Laboratories Hong Kong Limited
Tel: +852 3595 0515



ITALY

Randox Laboratories Ltd.
Tel: +39 06 9896 8954



INDIA

Randox Laboratories India Pvt Ltd.
Tel: +91 80 2802 5000



POLAND

Randox Laboratories Polska Sp. z o.o.
Tel: +48 22 862 1080



PORTUGAL

Irladox Laboratorios Quimica Analitica Ltda
Tel: +351 22 589 8320



PUERTO RICO

Clinical Diagnostics of Puerto Rico, LLC
Tel: +1 787 701 7000



REPUBLIC OF IRELAND

Randox Teoranta
Tel: +353 7495 22600



SLOVAKIA

Randox S.R.O.
Tel: +421 2 6381 3324



SOUTH AFRICA

Randox Laboratories SA (Pty) Ltd.
Tel: +27 (0) 11 312 3590



SOUTH KOREA

Randox Korea
Tel: +82 (0) 31 478 3121



SPAIN

Laboratorios Randox S.L.
Tel: +34 93 475 09 64



SWITZERLAND

Randox Laboratories Ltd. (Switzerland)
Tel: +41 41 810 48 89



UAE

Randox Medical Equipments Trading LLC
Tel: +971 55 474 9075



USA

Randox Laboratories-US, Ltd.
Tel: +1 304 728 2890



VIETNAM

Randox Laboratories Ltd, Vietnam
Tel: +84 (0) 8 3911 0904

For technical support contact: technical.services@randox.com



Information correct at time of print. Randox Laboratories Ltd is a subsidiary of Randox Holdings Limited a company registered within Northern Ireland with company number N.I. 614690. VAT Registered Number: GB 151 6827 08. Product availability may vary from country to country. Please contact your local Randox representative for information. Products may be for Research Use Only and not for use in diagnostic procedures in the USA.

LT365 MAR18